

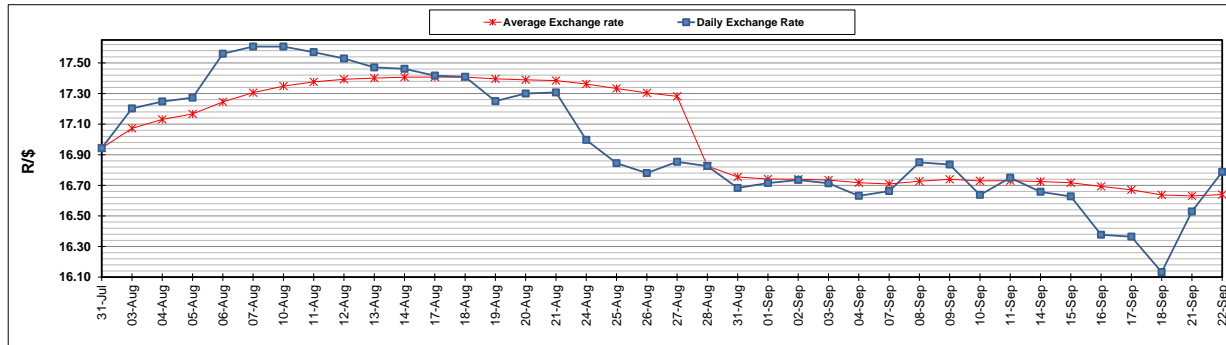
	PETROL 95 ULP	PETROL 93 ULP & LRP	DIESEL 0.05%	DIESEL 0.005%	ILL. PAR.
GAUTENG PUMP PRICE (SA c/l) AS FROM 02/09/2020	1,518.000	1,489.000	-	-	-
WHOLESALE PRICE (SA c/l) AS FROM 02/09/2020	-	-	1,327.560	1,331.960	716.828
SINGLE NATIONAL MAXIMUM RETAIL PRICE	-	-	-	-	899.000
BASIC FUEL PRICE - 22/09/2020 (SA c/l)	531.663	520.360	481.088	482.983	444.316
PRESS RELEASE CONTRIBUTION TO BFP 02/09/2020 - 22/09/2020 (SA c/l)	565.470	546.470	576.630	581.030	512.128
UNIT OVER/(UNDER) RECOVERY - 22/09/2020 (SA c/l)	33.807	26.110	95.542	98.047	67.812
AVERAGE BASIC FUEL PRICE 28/08/2020 - 22/09/2020	530.494	520.238	489.627	491.683	434.487
AVERAGE UNIT OVER/(UNDER) RECOVERY 28/08/2020 - 22/09/2020	35.693	26.949	90.503	92.847	81.974

### ANALYSIS MOVEMENT OF AVERAGE OVER/(UNDER) RECOVERY

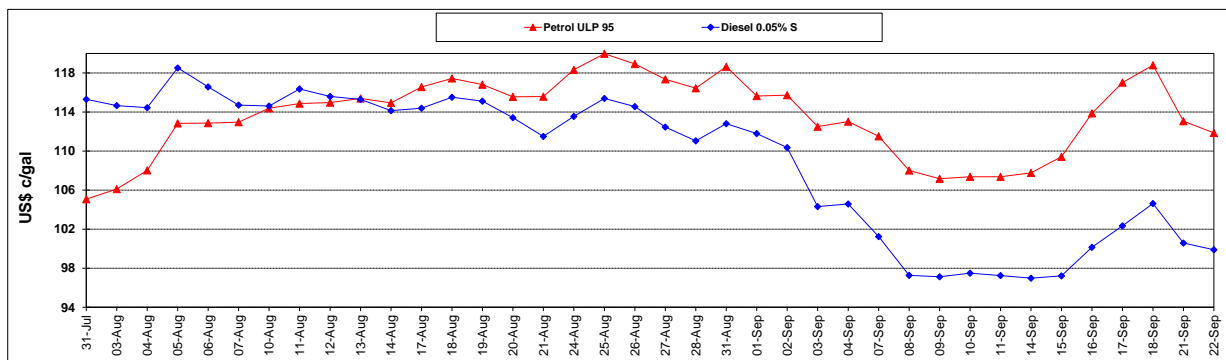
	PETROL 95	PETROL 93	DIESEL 0.05%	DIESEL 0.005%	ILL. PAR.
- MOVEMENT IN INTERNATIONAL PRODUCT PRICES	15.235	6.886	71.621	73.886	65.218
- MOVEMENT IN EXCHANGE RATE	20.458	20.063	18.882	18.961	16.756
AVERAGE UNIT OVER/(UNDER) RECOVERY 28/08/2020 - 22/09/2020	35.693	26.949	90.503	92.847	81.974

### R/\$ EXCHANGE RATE - (R/\$16.7880 - 22/09/2020)

#### EXCHANGE RATE USED IN BASIC FUEL PRICE



#### INTERNATIONAL PRODUCT PRICES OF BASKET USED IN BASIC FUEL PRICE



#### BASIC FUEL PRICE IN SA CENTS PER LITRE

